

# Municipal Good Housekeeping and Pollution Prevention

Danon Lawson – MEA; CPESC; CESSWI; CFM

The City of Gastonia

Stormwater Utility Administrator

**\*\*\* Vice Chair Gaston County Soil and Water Conservation District Board\*\*\***

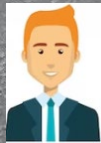


# Who is an “Elected Official?”

## Who Are you?

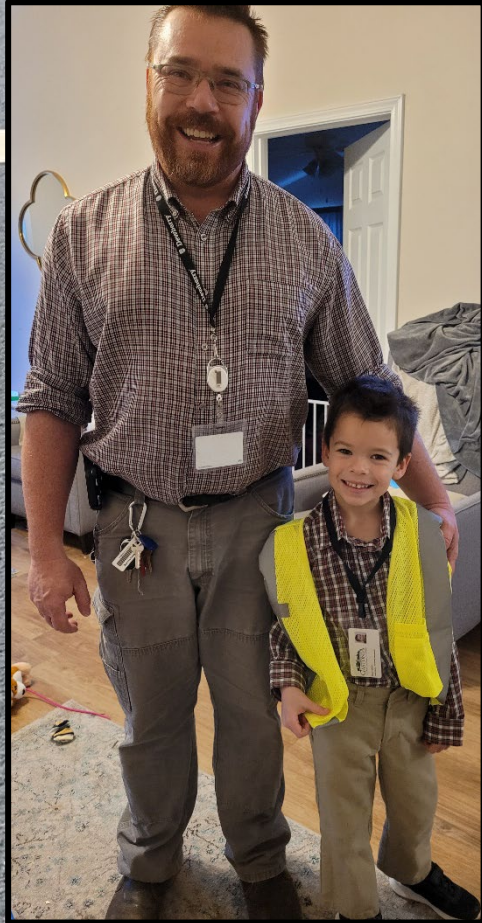
Official Definition: The term “elected official” means the Mayor, Council member, Commission member, Board Member, Alderman, or other position as part of a deciding governmental body representing public interests whether elected or appointed to fill a vacancy.

Unofficial Definition: A human being





# Why do we care about Stormwater?



The overarching goal is to ensure that our current AND the future of our surface water is clean. (As this impacts our current...AND future citizens and neighbors down stream!)

AND TO DO THIS, EDUCATION IS PIVOTAL

(IN OTHER WORDS: COMMUNICATION IS IMPORTANT!)



# Why do we care about Stormwater?

To better understand terminology, lets review what your permit means.

## The NPDES MS4 Permit

- NPDES – National Pollution Discharge Elimination System
- MS4 - Municipal Separate Storm Sewer System
- Permit – (Per Webster) – To Authorize or To Make Possible

In other words: An authorization from a governing body, which allows a municipality the ability to discharge water that falls on the surface of the ground within their city limits into waters of the US...in a manner that eliminates harmful components.

\*\*\*ALSO: This is an UNFUNDED FEDERAL MANDATE!\*\*\*



# Why do we care about Stormwater?

- Rain Tax

Vs

## Stormwater Fee

### What Is a Tax?

A tax is a mandatory payment or charge collected by local, state, and national governments from individuals or businesses to cover the costs of general government services, goods, and activities.

### What is the Utility Fee?

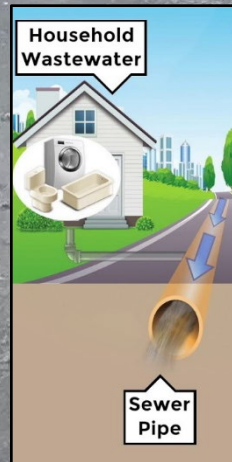
A payment or charge collected by local governments from individuals or businesses *that is levied and based on the individual or businesses use of the utility [in the case of stormwater “the contribution to stormwater discharge”]*. (ie. It is a utility that needs to be maintained, and the fee levied is based on those contributions and pressures put on the system)



# Why do we care about Stormwater?

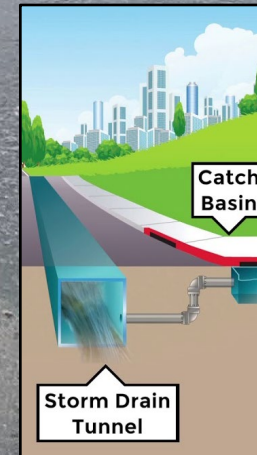
So lets get our terminology down  
(and a better understanding of our utility)

- Active Metered Utility



VS

## Passive Utility





# Why do we care about Stormwater?

So lets get our terminology down  
(and a better understanding of our utility)

- Active Metered Utility

Utilities are paid based on usage (How many units used per cycle)

VS

## Passive Utility

Unless utilities store the base book to pervious surface (grass, trees, etc) contributing to then these utilities off.





# What is “Good Housekeeping?” when talking about Stormwater

## Good Housekeeping

APRIL 1930 25 CENTS



*Achmed Abdullah - Margaret E. Sangster - Edison Marshall  
Elsie Singmaster - Elizabeth Frazer - Winifred Black*

I mean...technically this is Good Housekeeping...but that is not what we were talking about!



# #6....with a Bullet

## GOOD HOUSEKEEPING AND POLLUTION PREVENTION

- In a nutshell, this minimum measure is specific to the MS4 and how they manage their facilities and staff to ensure that stormwater pollution is prevented from leaving their facilities.

**BUT WHAT DOES THAT INVOLVE IS IT REALLY THAT COMPLEX?**



# #6...with a Bullet

- There are a number of challenges that come with housekeeping. Chief among them is the challenge associated with EACH municipality

Here are some questions to ask:

What facilities/entities in my municipality would contribute to my City's Permit and could impact the waters within my community?

Whose are the staff responsible?

What is the standard operating procedure to make sure that my municipal operation is functioning correctly?

Are the personnel in each of my Good Housekeeping spots trained and knowledgeable on how to prevent pollution and react to an emergency spill/illicite discharge?



AND NOW...THE SECOND HALF OF THE  
SHOW!!!

Introducing Mallory Hodgson!!!





Harrisburg **NC**  
CELEBRATING 50 YEARS



# Good Housekeeping in Municipal Operations

March 9, 2023

RSPC Elected Officials Workshop



# What does GHK at a Municipal Facility Look Like?





# You'll need a plan!

## Get your SWPPP Together

A stormwater pollution prevention plan (SWPPP) is a written document that lists the potential sources of stormwater pollution, describes practices that will be used to reduce pollutants, and helps ensure compliance





# All about the SWPPP

- **Who** Identify the team responsible for good housekeeping, establish a point of contact
- **Where** Identify the facilities that the municipality maintains and develop a SWPPP for each site
- **What** Describe practices that will be used to reduce pollutants, and helps ensure compliance
- **When** Describe timing, documentation, and reporting requirements of the MS4 within the SWPPP



# So..What all goes into this SWPPP?

## Adequate Staff \*

GHK will be the first thing to slip without adequate staff.

Staff that is trained to notice deficiencies in good housekeeping and are empowered to correct the issues



# I've got the people, now what?

## Training & Empowering the Team

Create Ownership and Pride

Set the Example

Say "Thank you"





# Where do I need a SWPPP?

Anywhere your municipality conducts Operations

Public Works

Airports

Parks

Fleet Services

City/Town Hall

Fire Stations

Police Stations



**SWPPP should be site specific!**



# How can Elected Officials Help

- Understand the basics of Permit Compliance
- Support of staff with funding for staff, equipment, compliance services & involvement in regional partnerships
- Aid in development of revenue streams to support funding
- Support and encourage stormwater friendly development initiatives
- Recognize Staff Efforts



# Conclusion

- You need a SWPPP to have GHK
- Elected Official Support is Critical
- Elected Officials should lean on staff expertise to develop strategies and initiatives for GHK

Thank you!